



**BUILDING UPON
EXPLORATION SUCCESS
FEBRUARY 2024**



Important Notice

The information contained in this document (the "Presentation") has been prepared and distributed by Deltic Energy PLC (the "Company"). It has not been fully verified and is subject to material updating, completion, revision, verification and further amendment. This Presentation has not been approved by an authorised person in accordance with Section 21 of the Financial Services and Markets Act 2000, as amended ("FSMA"). The securities mentioned herein have not been and will not be, registered under the U.S. Securities Act of 1933, as amended (the "Securities Act"), or under any U.S. State securities laws, and may not be offered or sold in the United States unless they are registered under the Securities Act or pursuant to an exemption from or in a transaction not subject to the registration requirements of the Securities Act. This Presentation is for information purposes only and does not constitute, and the Company is not making, an offer of securities.

While the information contained herein has been prepared in good faith, neither the Company nor any of its shareholders, directors, officers, agents, employees or advisers give, have given or have authority to give, any representations or warranties (express or implied) as to, or in relation to, the accuracy, reliability or completeness of the information in this Presentation, or any revision thereof, or of any other written or oral information made or to be made available to any interested party or its advisers (all such information being referred to as "Information") and liability therefore is expressly disclaimed. Accordingly, neither the Company nor any of its shareholders, directors, officers, agents, employees or advisers take any responsibility for, or will accept any liability whether direct or indirect, express or implied, contractual, tortious, statutory or otherwise, in respect of, the accuracy or completeness of the Information or for any of the opinions contained herein or for any errors, omissions or misstatements or for any loss, howsoever arising, from the use of this Presentation.

Prospective investors must rely on their own examination of the legal, taxation, financial and other consequences of an investment in the Company, including the merits of investing and the risks involved. Prospective investors should not treat the contents of this Presentation as advice relating to legal, taxation or investment matters and are advised to consult their own professional advisers concerning any acquisition of shares in the Company. This Presentation should not be considered a recommendation by the Company or any of its affiliates in relation to any prospective acquisition of shares in the Company.

Certain of the information contained in this Presentation has been obtained from published sources prepared by other parties. Certain other information has been extracted from unpublished sources prepared by other parties which have been made available to the Company. The Company has not carried out an independent investigation to verify the accuracy and completeness of such third party information. No responsibility is accepted by the Company or any of its directors, officers, employees or agents for the accuracy or completeness of such information.

All statements of opinion and/or belief contained in this Presentation and all views expressed represent the directors' own current assessment and interpretation of information available to them as at the date of this Presentation. In addition, this Presentation contains certain "forward-looking statements", including but not limited to, the statements regarding the Company's overall objectives and strategic plans, timetables and capital expenditures. Forward-looking statements express, as at the date of this Presentation, the Company's plans, estimates, forecasts, projections, opinions, expectations or beliefs as to future events, results or performance. Forward-looking statements involve a number of risks and uncertainties, many of which are beyond the Company's control, and there can be no assurance that such statements will prove to be accurate. No representation is made or assurance given that such statements or views are correct or that the objectives of the Company will be achieved. The reader is cautioned not to place reliance on these statements or views and no responsibility is accepted by the Company or any of its directors, officers, employees or agents in respect thereof. The Company does not undertake to update any forward-looking statement or other information that is contained in this Presentation. Neither the Company nor any of its shareholders, directors, officers, agents, employees or advisers take any responsibility for, or will accept any liability whether direct or indirect, express or implied, contractual, tortious, statutory or otherwise, in respect of, the accuracy or completeness of the information contained in this Presentation or for any of the opinions contained herein or for any errors, omissions or misstatements or for any loss, howsoever arising, from the use of this Presentation.

This document may not be reproduced, copied, published, distributed or circulated, to any third party, in whole or in part, or published in whole or in part for any purpose, without the express prior consent of the Company.

Board & Management

Driven and highly competent management team with >100 years of UKCS Experience



Graham Swindells
Chief Executive Officer

Graham joined Deltic as Chief Financial Officer in 2013 and became Chief Executive in 2018. He previously worked in corporate finance and M&A, specialising in advising mid and small-cap public companies. Before joining Deltic, he was a Director in Corporate Finance at Ernst & Young. Previously, he was a Director in Corporate Finance at Arbuthnot Securities where he gained significant natural resources experience acting as nominated adviser and broker. He qualified as a Chartered Accountant in Scotland working for BDO and subsequently PwC.



Andrew Nunn
Chief Operating Officer

Andrew is a Chartered Geologist with over 20 years of experience working on exploration, mining and geo-environmental projects in Europe, Australasia and Africa. For the last 10 years he has worked on a wide variety of UK and European conventional and unconventional gas projects with a primary focus on Carboniferous aged reservoirs. Andrew's previous role was as Exploration Manager for Dart Energy. He holds a B.Sc. (Hons) in Economic Geology and an M.Sc. in Environmental Management. Andrew was a Director of the Oil and Gas Independents' Association (OGIA) from February 2020 until July 2024.



Sarah McLeod
Chief Financial Officer

Sarah joined Deltic as Chief Financial Officer in January 2020. Sarah has 20 years of experience in the international oil and gas industry. She previously held the position of Group Financial Controller at New Age. Sarah spent 10 years with ConocoPhillips in a variety of senior financial and strategic roles and also two years with Maersk Oil. She started her career with Deloitte, spending six years in its oil and gas team during which time she qualified as a Chartered Accountant.



Mark Lappin
Non-Executive Chairman

Mark has over 35 years of experience in the oil and gas industry. Mark's recent roles include Technical Director at Cuadrilla and prior to that Sub-Surface Director for UK and Netherlands at Centrica. Mark began his career as a Geophysicist at Phillips Petroleum and has held senior technical and commercial roles with Phillips, Exxon Mobil and Dart Energy. Mark's North Sea focussed operational, commercial and super-major E&P experience will be hugely valuable as the company moves into the next stage of its development. Mark is a Visiting Professor at University of Strathclyde Centre for Energy Policy.



Peter Cowley
Non-Executive Director

Peter Cowley is a geologist with 50 years of international experience in the minerals industry and has been involved in the discovery and development of a number of gold mines in Africa. Peter was previously Managing Director of Ashanti Exploration Limited, Group Technical Director of Cluff Resources Plc, CEO of Banro Corporation and is currently President and a Director of Loncor Gold Inc. He holds M.Sc. and M.B.A. degrees and is a Fellow of Institute of Materials, Minerals and Mining.



Peter Nicol
Non-Executive Director

Peter has 40 years of experience in the energy sector. He was previously Head of Oil & Gas at GMP Securities Europe, Global Sector Director of Oil & Gas Research at ABN Amro & Head of European Oil & Gas Research at Goldman Sachs. Peter is a non-executive director of exploration focussed Touchstone Exploration Inc. & Eco (Atlantic) Oil & Gas Ltd, both of which are AIM quoted. He is also an independent director of ERC Equipose Limited. Peter started his career with British National Oil Corporation & holds a Bachelor of Science in Mathematics & Economics from Strathclyde University

Corporate Structure and Major Shareholders

AIM:DELT

CAPITAL STRUCTURE	
Share Price ¹	31 p
Shares in Issue	93m
Options	11m
Free Float	80.8%
Cash ²	£6.1m
Debt	NIL
Market Capitalisation ¹	£28m

¹ as at 8th February 2024

² as at 30 November 2023 (unaudited)

MAJOR SHAREHOLDERS ³	%
IPGL (Michael Spencer)	18.8
Hargreaves Lansdown	10.2
Interactive Investor	10.2
Inthallo (Richard Sneller)	9.8
Canaccord	5.5
Janus Henderson	5.2
Lloyds	3.1
Holder of <3%	37.2

³ as at 31st January 2024

Delivering Our UK Exploration Strategy

High impact SNS Gas Exploration

- Major discovery with first well at Pensacola in January 2023
- Pensacola appraisal well scheduled for Q4 2024
- Exploration well on Selene gas prospect planned for Q3 2024

Exploration Success is Route to Growth

- Focus on value enhancement through the drill bit
- Leverage significant equity to reduce future capital exposure
- Retain exposure to future production revenues
- Use revenues to reduce cycle times on new opportunities

Build Strong Partnerships

- Non-operated model requires quality operators like Shell
- Allows Deltic to leverage the capabilities of major E&P companies
- Independent resource certification provides validation
- Technical partnerships keep overheads down

Securing the future of domestic gas production in the UK

- Natural gas is a key part of the energy mix during the transition to Net Zero
- Domestic production is less carbon intensive and key for UK energy security
- UK production provides UK jobs and tax revenue

SYROS PROSPECT

24.5 mmbbls (Gross P50 Prospective Resources)
100% Deltic
Farm-out Process Active

PENSACOLA DISCOVERY

326 mmboe (Gross P50 HIIP)
15-21.8mmboe (Net 2C Resources)
Shell UK Operated
Appraisal Well Q4 2024

SELENE PROSPECT

318 BCF (Gross Prospective Resources)
Shell UK Operated
Exploration Well Q3 2024

Teesside 

Easington 

Bacton 

Core Asset Overview

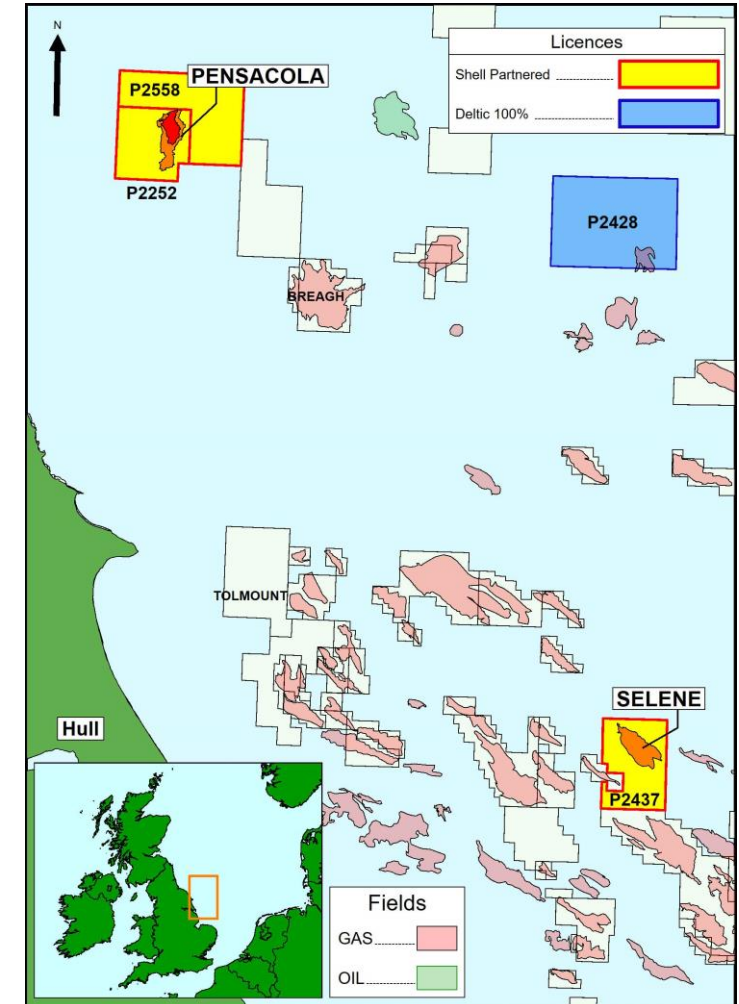
Material Resource Base Focussed on Southern North Sea

PENSACOLA DISCOVERY Licence P2252				Net Contingent Resources (mmboe)			Post-Tax 2C NPV10 Net to Deltic
Working Interest	Operator	Formation	Development Scenario	1C	2C	3C	USD\$M
30%	Shell UK	Zechstein Hauptdolomit	Gas Only	5.7	15	32	199
			Combined	7.2	21.8	46.5	205

SELENE PROSPECT Licence P2437				Gross Prospective Resources (BCF)			GCoS
Working Interest	Operator	Formation	HC Type	1C	2C	3C	%
25% ¹	Shell UK	Leman Sst	Gas	132	318	581	70

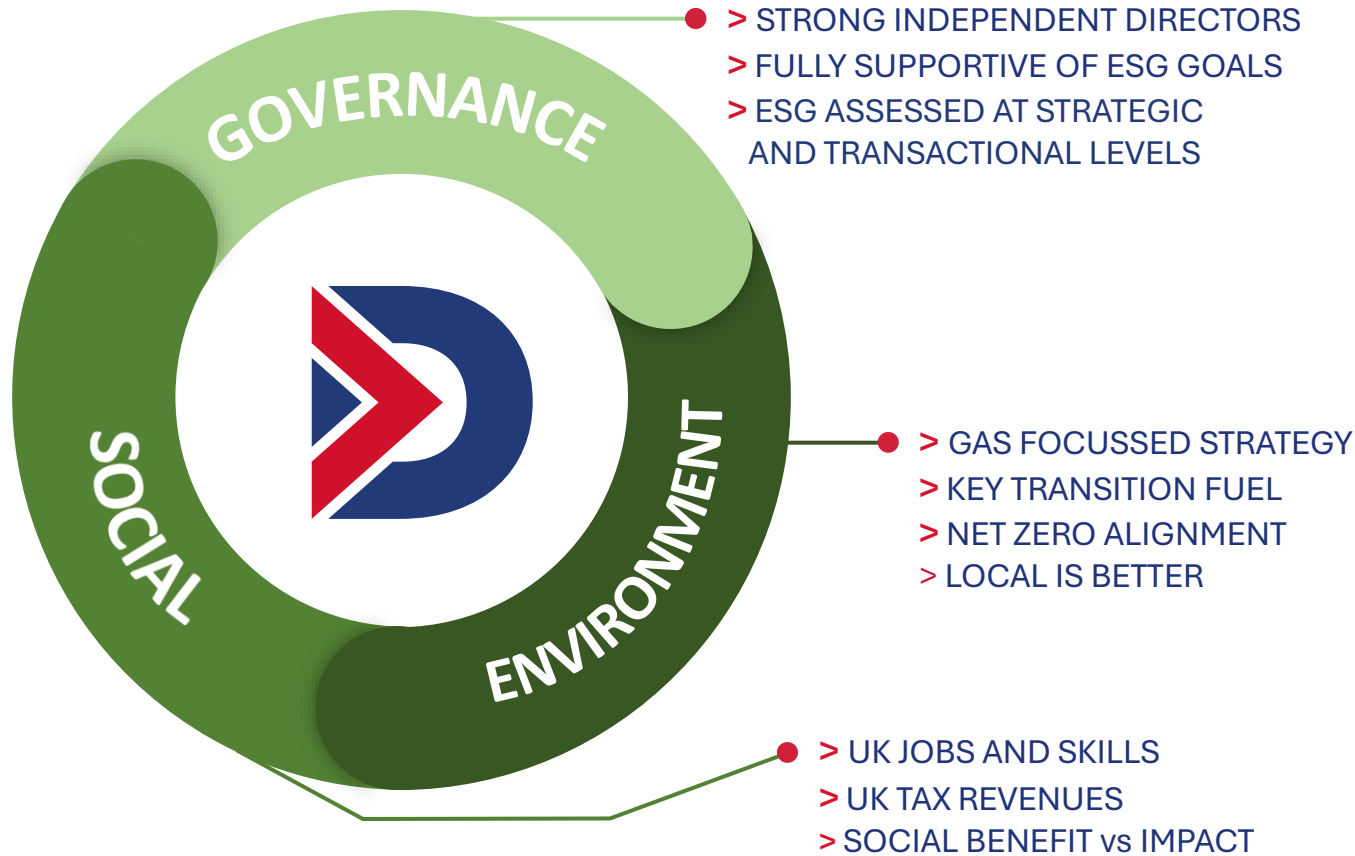
SYROS PROSPECT (CNS) Licence P2452				Gross Prospective Resources (MMboe)			GCoS
Working Interest	Operator	Formation	HC Type	1C	2C	3C	%
100%	Deltic	Fulmar Sst	Oil	13.7	24.5	39.7	58

¹ subject to completion of farm-out to Dana Petroleum



Commitment to ESG

Health & Safety. Environment. Net Social Benefit.



Governance

- > Governance aligned with QCA guidelines
- > Board supported H&S, Environment & ESG policies
- > Climate related disclosures in Annual Report since 2021

Health and Safety

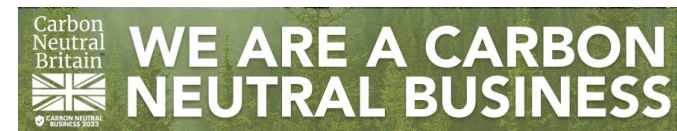
- > Health and safety of staff, public and other stakeholders is a key business priority
- > Key RIDDOR stats published in Annual Report since 2021

Environment

- > Certified Carbon Neutral Business in 2024
- > UK natural gas focussed portfolio
- > UK gas consumption >> UK gas production
- > UK produced gas has lower CO₂ intensity than imported LNG

Focus on Net Social Benefit

- > Gas is part of the energy mix for the foreseeable future
- > Also petrochemicals, domestic heating and hydrogen
- > Maximise benefits and mitigate drawbacks of natural gas
- > UK production = UK jobs, tax revenues & security of supply





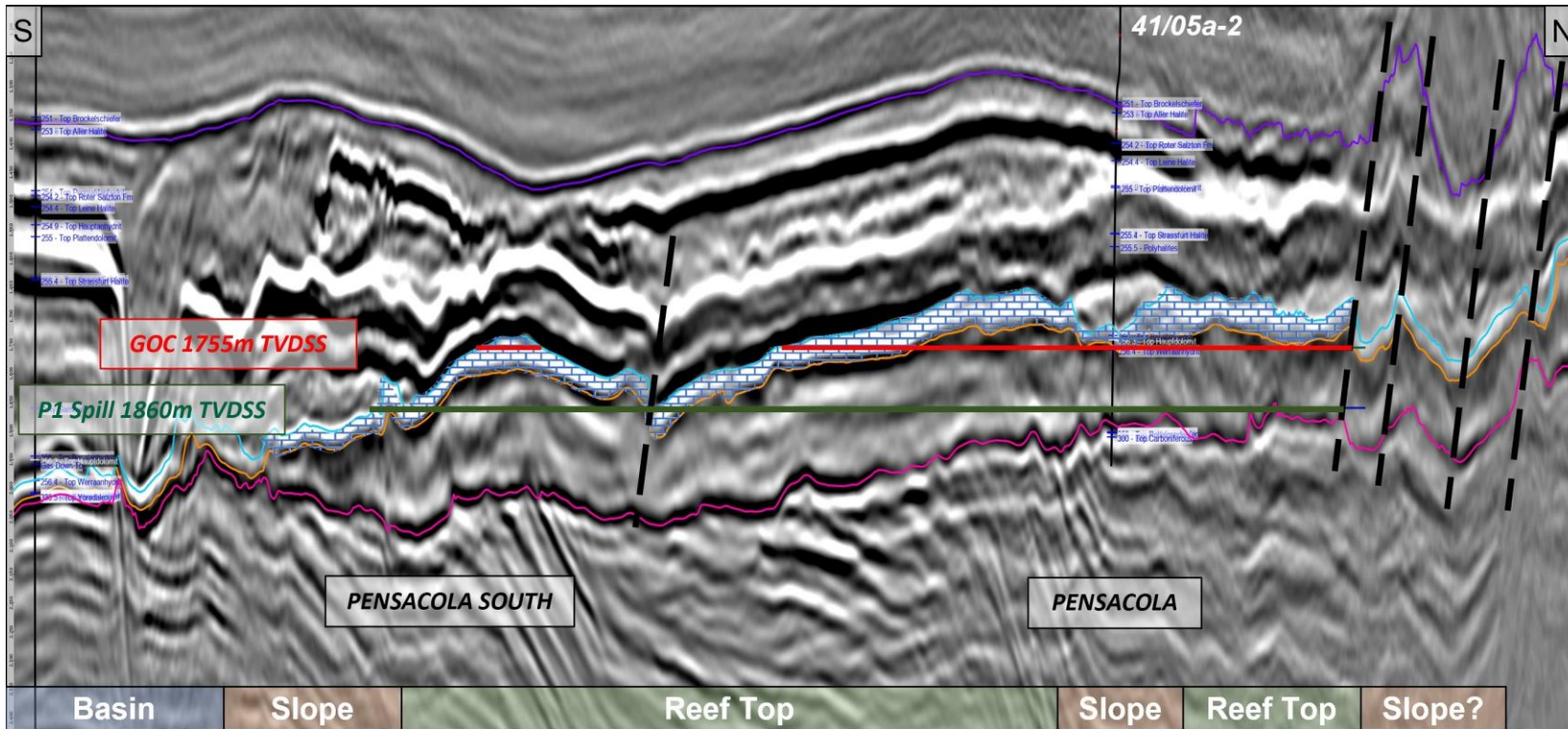
**LICENCE P2252
PENSACOLA DISCOVERY**

APPRAISAL WELL PLANNED FOR Q4 2024

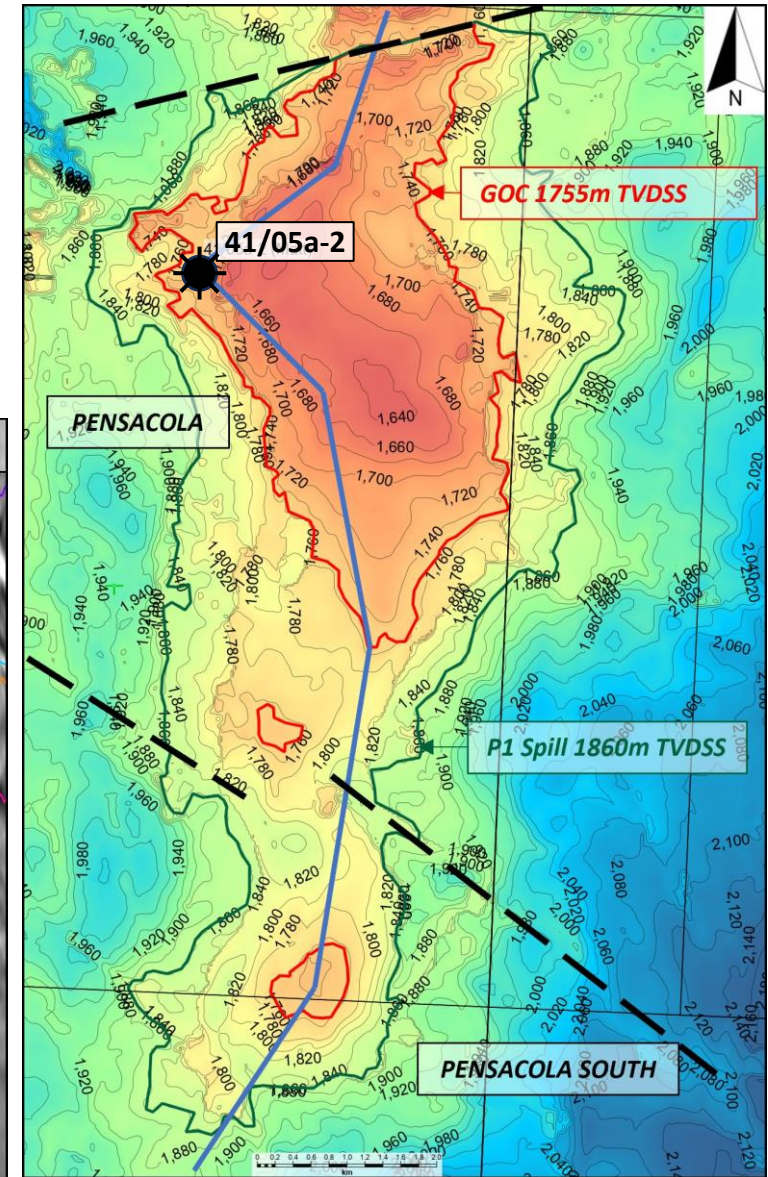
Pensacola Discovery (30% Deltic)

Competent Persons Report completed by RPS Energy (Jan 2024)

- Confirms significant oil and gas discovery with gross P50 HIIP of 326 MMboe
- Maiden Contingent Resources estimates based on two potential development scenarios
- Positive commercial evaluation supports future development
- Potential for Pensacola to become key hub in developing wider Zechstein play



N-S Seismic Line Showing Facies and Hydrocarbon Type Distribution



Top Hauptdolomit Depth Structure mTVDSS Map

Pensacola Discovery

Gas Only Development Scenario

- Independently (RPS) certified contingent resources assessment and valuation
- 2C Resources of 15 MMboe and post-tax NPV10 of USD\$199M net to Deltic
- 3 well development with normally unmanned installation
- Gas export via new pipeline to Teesside
- CAPEX estimated at USD \$844M
- CO₂ removal onshore and re-injected
- RPS Q4 2023 forward commodity price assumptions

CONTINGENT RESOURCES

Hydrocarbon Type	Units	Deltic Net Working Interest ¹		
		1C	2C	3C
Gas	Bscf	34	89	190
Condensate	MMstb	0.1	0.2	0.4
Oil Equivalent	MMboe²	5.7	15.0	32.0

¹Deltic holds a 30% working interest in P2252

²Conversion rate of 6,000 scf per boe

ECONOMIC EVALUATION

Gas Only Case	ELT ¹ Date	Post-Tax NPV – Net to Deltic ²			
		USD\$ Million			
	Discount Rate	0%	10%	12%	15%
1C	2034	124	20	8	(6)
2C	2044	599	199	158	111
3C	2058	1,664	412	323	226

¹ Economic Limit Test

² Deltic holds a 30% working interest in P2252

Pensacola Discovery

Combined Oil and Gas Development Scenario

- Independently (RPS) certified contingent resources assessment and valuation
- 2C Resources of 21.8 MMboe and post-tax NPV10 of USD\$205M net to Deltic
- 6 well development with one normally unmanned installation & one manned installation
- Gas & oil exports via new pipelines to Teesside
- CAPEX estimated at USD \$1,544M
- CO₂ removal onshore and re-injected
- RPS Q4 2023 forward commodity price assumptions

CONTINGENT RESOURCES

Hydrocarbon Type	Units	Deltic Net Working Interest ¹		
		1C	2C	3C
Gas	Bscf	34.1	93.9	185.0
Oil	MMstb	1.4	5.9	15.3
Condensate	MMstb	0.1	0.2	0.4
Oil Equivalent	MMboe²	7.2	21.8	46.5

¹Deltic holds a 30% working interest in P2252

²Conversion rate of 6,000 scf per boe

ECONOMIC EVALUATION

Gas Only Case	ELT ¹ Date	Post-Tax NPV – Net to Deltic ²			
		USD\$ Million			
	Discount Rate	0%	10%	12%	15%
1C	2036	(29)	(114)	(121)	(127)
2C	2048	792	205	148	84
3C	2058	2,236	549	426	290

¹ Economic Limit Test

² Deltic holds a 30% working interest in P2252

Pensacola – Next Steps

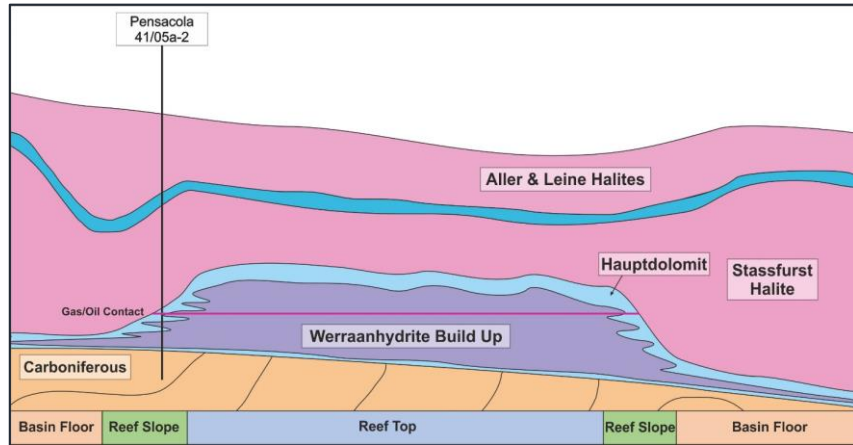
Appraisal well with Shell scheduled for Q4 2024

JV working towards appraisal in Q4 2024

- Positive well investment decision taken by JV in Q4 2023
- Appraisal well scheduled for late 2024
- Site survey commenced and rig contract with Valaris in place

Key objectives of the appraisal well

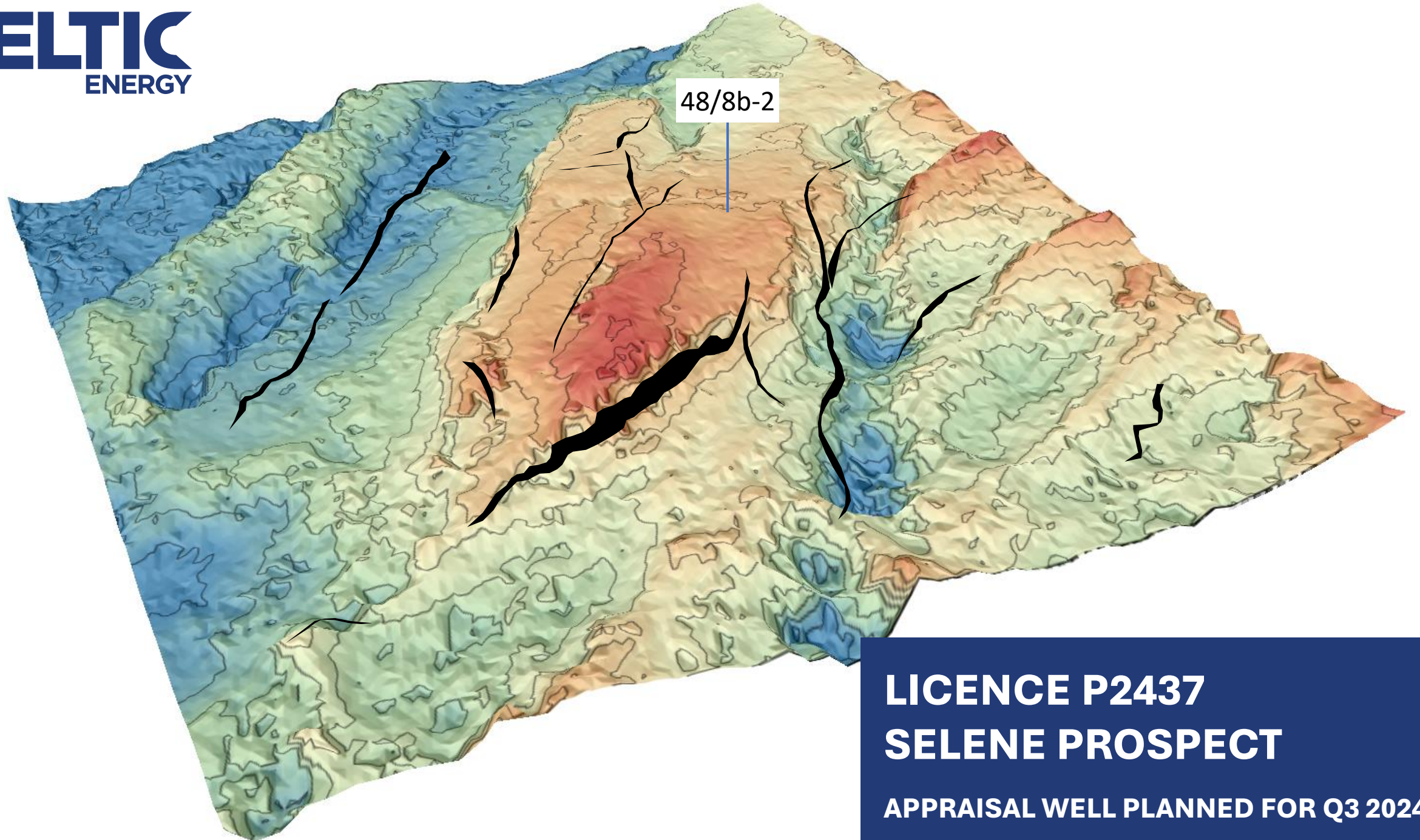
- Reduce residual volumetric uncertainty
- Confirm character of thicker reservoir expected in reef top facies
- Demonstrate gas flow rates for facilities and export pipeline sizing



Near term crystallisation of value from success

- Deltic seeking an additional partner to the Pensacola JV with aim of:
 - Reducing cost exposure to appraisal and development activity
 - Retaining exposure to appraisal success, future cash flow and potential commodity price rises
 - Recovering an element of back costs

PENSACOLA PROJECT TIMELINE - ACTIVITY		2023												2024													
		J	F	M	A	M	J	J	A	S	O	N	D	J	F	M	A	M	J	J	A	S	O	N	D		
Discovery	Drilling Operations	█																									
	Post-well Laboratory Analysis	█		█		█		█		█		█															
	Post-well Geological Evaluation	█		█		█		█		█		█															
	Scope appraisal requirements	█		█		█		█		█		█															
	JV to inform NSTA of next steps	█		█		█		█		█		█															
Appraisal - Site Survey	Development Option Review	█		█		█		█		█		█															
	Survey Scope													█		█		█		█		█		█		█	
	Tender Process													█		█		█		█		█		█		█	
	Environmental Permitting													█		█		█		█		█		█		█	
	Field Work													█		█		█		█		█		█		█	
Appraisal Well	Laboratory Analysis													█		█		█		█		█		█		█	
	LLI AFE Approval													█		█		█		█		█		█		█	
	Procurement Long Lead Items													█		█		█		█		█		█		█	
	Environmental Permitting													█		█		█		█		█		█		█	
	Rig Mobilisation													█		█		█		█		█		█		█	
Well Drilling Operations	Well Drilling Operations													█		█		█		█		█		█		█	
	Well Drilling Operations													█		█		█		█		█		█		█	



**LICENCE P2437
SELENE PROSPECT**

APPRAISAL WELL PLANNED FOR Q3 2024

Selene Prospect (25% Deltic)¹

High impact, Shell operated exploration well in Q3 2024

Deltic has 25% of one of the largest untested structures in this established production area

- Opportunity identified by Deltic and farmed-out to Shell in 2019 and Dana in 2024
- Well defined 4-way dip closed Lemn Sst structure with full 3D seismic coverage
- Shell operated well targeting P50 prospective resources of 318 BCF (53mmboe)
- Legacy well with gas shows down dip = low risk opportunity with GCoS of 70%

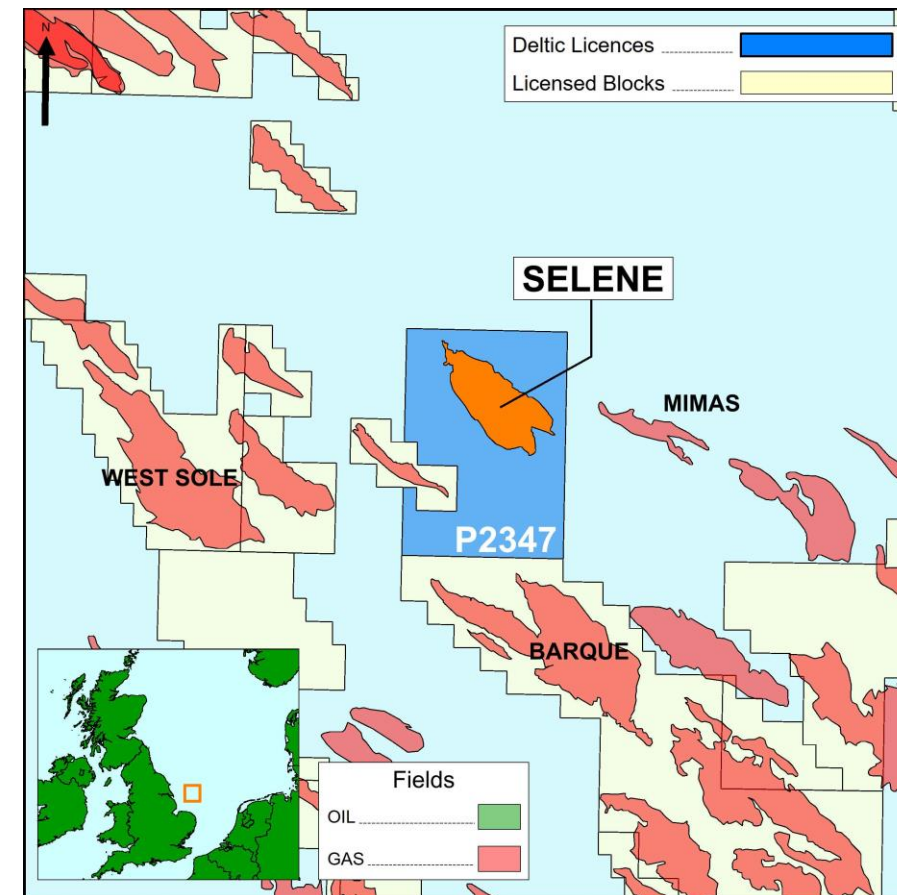
Deltic is fully carried through the Q3 2024 exploration well

- Following farm-outs to Shell UK Ltd and Dana Petroleum, Deltic is fully carried upto a total well cost of USD\$49M (success case)
- Shell currently estimates a total success case well cost of USD\$47M

Simple tie-back development to Shell owned infrastructure at Barque

- <25km tie back to existing production infrastructure at Barque
- Gas transported via Clipper hub to Bacton Gas Terminal in Norfolk
- Nationally important infrastructure ensures long term offtake option
- Bacton identified as key location for various hydrogen and CCS projects

¹ subject to completion of farm-out to Dana Petroleum



PROSPECTIVE RESOURCES

HC Type	Units	Gross Prospective Resources ²			GCoS %
		P90	P50	P10	
Gas ¹	Bscf	132	318	581	70

¹ Deltic's estimate of recoverable hydrocarbons

² Deltic will hold a 25% working interest in P2437

Selene Prospect (Licence P2437)

Dana Transaction – Deltic now fully carried for estimated success case drilling costs

Deltic to farm-out 25% WI to Dana Petroleum

- Dana to pay USD\$500k in relation to costs incurred by Deltic pre-well
- Dana to pay 25% of well related costs (ie Site Survey / LLI) incurred in Q4 2023
- Dana to pay up to USD\$5M of Deltic's costs in relation to the well
 - This increases to USD\$6M in Success Case
- Costs in excess of the cap are shared along equity lines

Designed to work in conjunction with pre-existing Shell carry

- Dana's carry is only drawn-down once the legacy Shell carry is exhausted
- Result is a full carry up to USD\$40M in dry case and USD\$49M in success case
- Success case criteria is related to various reservoir quality KPI's (thickness, porosity and gas saturation)

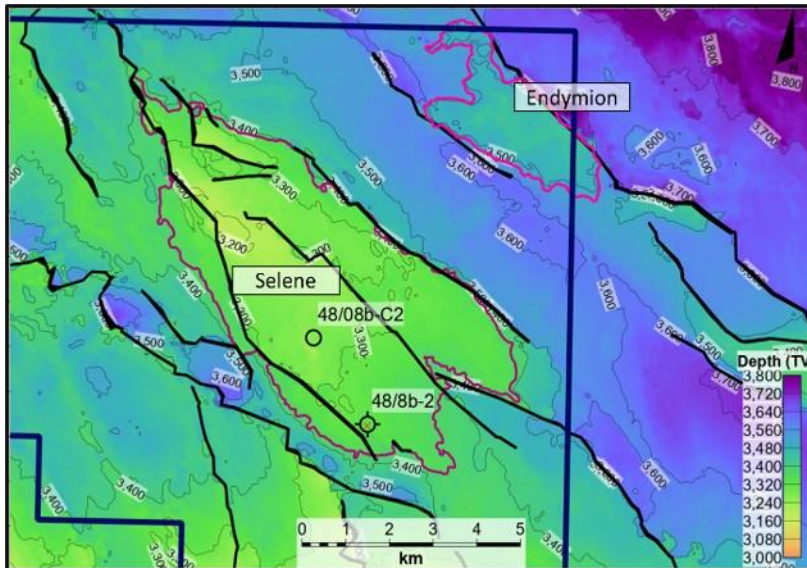
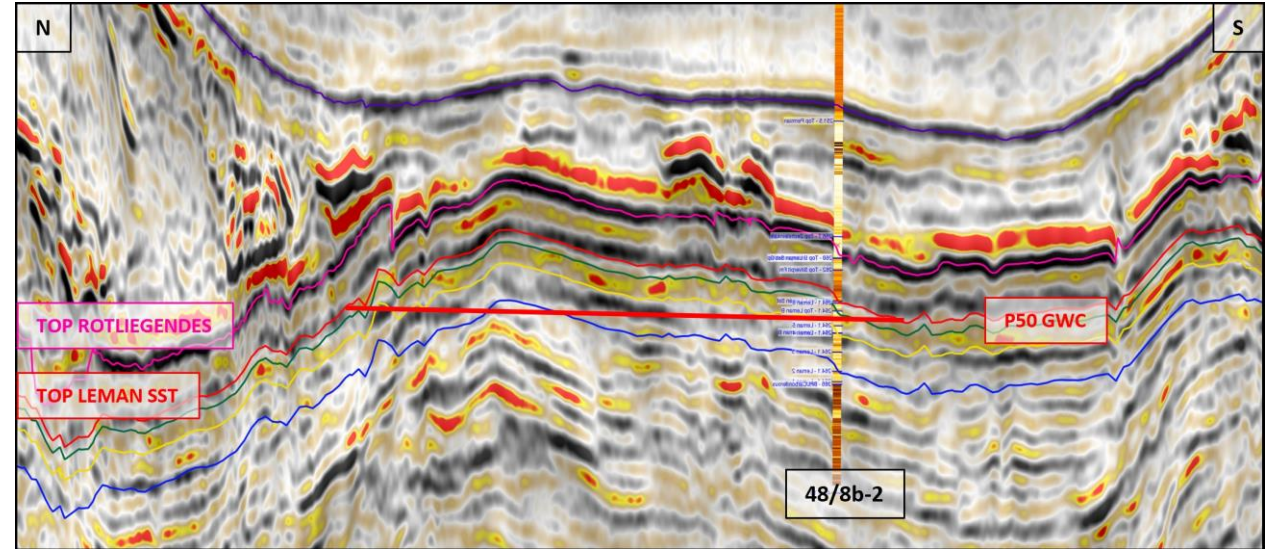
Well on track for July 2024 Spud

- Rig contract for Valaris 123 with June-July start for Selene well
- AFE indicates dry hole cost of USD\$42M and success case of USD\$47M
- Operator is optimising the well plan so still potential for further revision of costs
- Rig goes directly from Selene to Pensacola appraisal well

High impact Selene well scheduled for Q3 2024

Preparatory work for drilling is well advanced

- Detailed well design work is ongoing at Shell
- Geophysical site survey completed in August 2023
- Geotechnical site survey completed in December 2023
- Long lead items ordered to support July well spud
- Rig contract with Valaris in place



Top Leman Sandstone Depth Structure Map (mTV DSS)

SELENE PROJECT TIMELINE - ACTIVITY		2023												2024											
		J	F	M	A	M	J	J	A	S	O	N	D	J	F	M	A	M	J	J	A	S	O	N	D
Well Design	Well Outcome Definition	█																							
	Concept Identification		█																						
	Location Confirmation			█																					
	Deine Data Acquisition Programme				█																				
	Well Concept Selection					█																			
	Detailed Well Design						█																		
Site Survey	Drilling Program																								
	Survey Scope	█																							
	Tender Process			█																					
	Environmental Permitting			█																					
	Field Work				█																				
Well Operations	Laboratory Analysis																								
	LLI AFE Approval																								
	Procurement Long Lead Items																								
	Environmental Permitting																								
	Rig Mobilisation																								
	Well Drilling Operations																								
	Post-Well Analysis																								

Selene well planning work flows and timelines

A topographic map of a region, likely in the Middle East, showing contour lines and elevation. A specific area on the right side of the map is highlighted with a black outline and filled with a color gradient from purple to green to yellow, representing a prospect. A red-bordered box with the word 'SYROS' is placed above this highlighted area. Three blue lines originate from the DELTA ENERGY logo and point towards the map.

SYROS

**LICENCE P2542
SYROS PROSPECT
ACTIVE FARM-OUT PROCESS**

P2542 - Syros (100% Deltic)

Infrastructure Led Central North Sea Oil Prospect

Updated Interpretation on newly available 3D seismic dataset

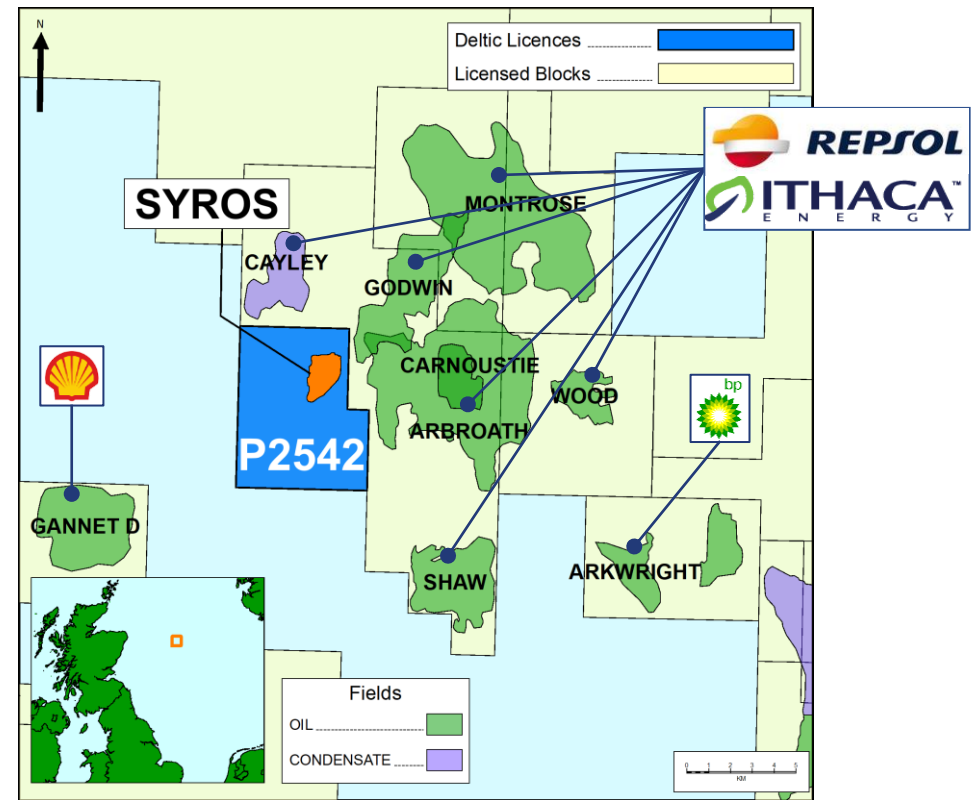
- Rotated Fulmar Sst fault block imaged on Cornerstone Evo 3D seismic
- Syros is analogous to producing fields and Shell's recent Orlov discovery
- Significant offtake infrastructure located around Montrose-Arbroath high

Syros Prospect

- P50 Prospective Resources of 24.5MMboe – high GOR oil
- GCoS of 58% - similar pre-drill risks to nearby Cayley and Shaw fields
- Normal temperature & pressure, 90m of water – simple exploration well
- Multiple potential offtake options within 6-15kms

Farm-out Process Commenced

- Aim to attract an established Operator with firm commitment to drilling activity in 2025



PROSPECTIVE RESOURCES

HC Type	Units	Gross Prospective Resources ²			GCoS %
		P90	P50	P10	
Oil ¹	MMboe	13.7	24.5	39.7	58

¹ Deltic's estimate of recoverable hydrocarbons

² Deltic holds a 100% working interest

Further upside potential arising from 33rd Licensing Round

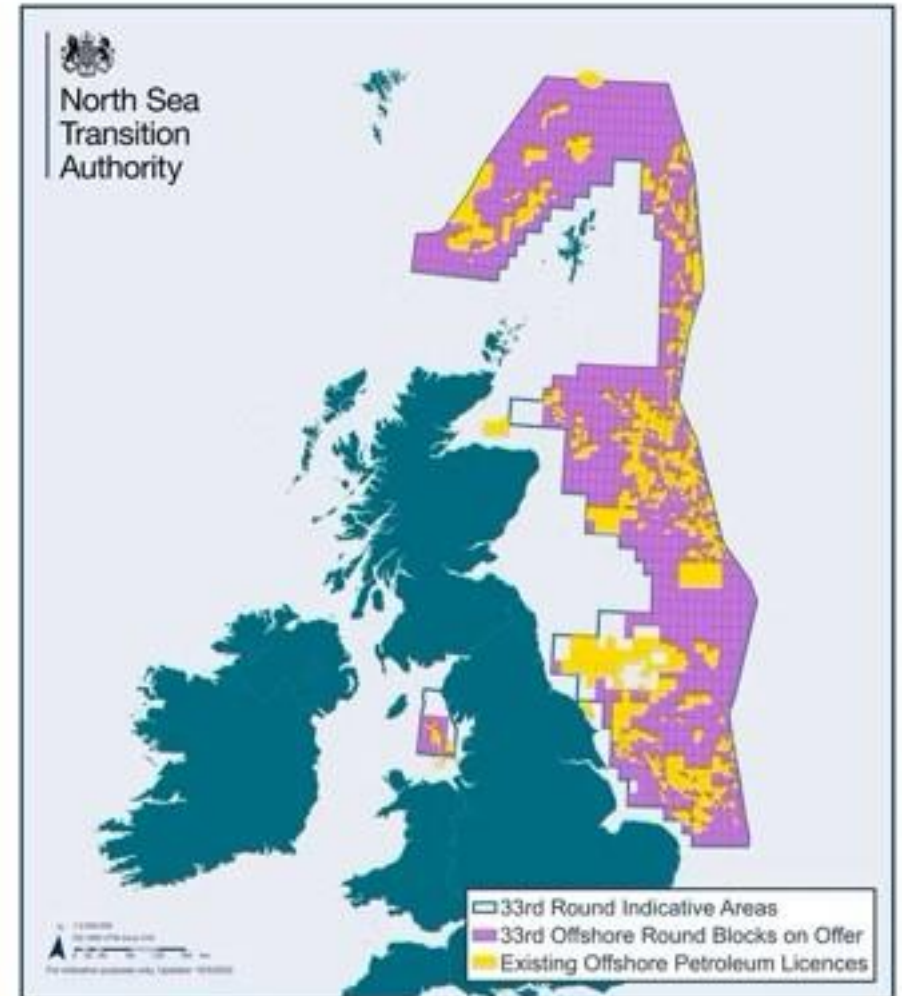
Deltic applied for a package of assets, awards expected from Q1 2024

Building the opportunity set and diversifying the portfolio

- Deltic has a successful track record of acquiring licences organically
- Regular licence rounds provide low cost access to high quality exploration acreage
- Deltic bids centred around low cost work programmes limiting financial exposure prior to well investment decisions

Multiple applications were submitted to NSTA in January 2023

- Over 898 blocks and part blocks offered by the NSTA in 33rd Round
- Applications were submitted in January 2023 for areas of interest around core SNS and CNS licences
- NSTA interviews occurred in June 2023
- Two CNS licences provisionally awarded in Tranche 2 in Jan 2024
- Expected announcement of Tranche 3 awards, including SNS Licences in 1H 2024



Deltic is delivering on its business plan

- **UK Gas focussed exploration strategy will deliver value through the drill bit**
 - Right product – gas is recognised as key transition fuel
 - Right place – world class gas basin
 - Right time – proposition de-risked following first discovery & further high impact catalysts in next 12 months
- 🐚 **First exploration well with Shell resulted in major oil and gas discovery on the Pensacola licence**
- 🐚 **Appraisal well planning underway on the Pensacola discovery, with the well scheduled for Q4 2024**
- 🐚 **Second exploration well with Shell targeting the 318 BCF Selene prospect will be drilled in Q3 2024**
- **Ongoing farm-out process on Syros could deliver a further exploration well in the CNS**
- **New licence round awards from Q1 2024 – opportunity to further grow and diversify the portfolio**



Deltic Energy Plc

**First Floor
150 Waterloo Road
London
SE1 8SB
United Kingdom**

Tel: +44 (0)20 7887 2630

Email: ir@delticenergy.com

www.delticenergy.com

**Carbon
Neutral
Britain™**



**CARBON NEUTRAL
BUSINESS 2024**

Proud member of

